

RTL-46DM-HS

Spacer | Product Overview



Description

Designed for up to 46kV (phase-phase) distribution voltage, the RTL-46DM-HS is a three phase spacer used in Hendrix Spacer Cable Systems. Mounted on a messenger wire, the RTL-46DM-HS will support and separate the phase cables in a diamond configuration below the messenger. The RTL-46DM-HS includes a Messenger Suspension Clamp that fastens on the messenger and is a pivot point to hang a spacer vertically. This spacer uses ratcheting clamps to secure the cables. The messenger suspension clamp is designed for use with hot sticks allowing workers to handle high voltage equipment while maintaining a farther distance, reducing the risk of electrical shock or arc flash. Hendrix spacers are molded using a proprietary gray track resistant and UV resistant high density polyethylene material.

Benefits

- Designed for use with hotstick tools.
- Easy and efficient installation and replacement.
- Integral ratcheting clamps secure a wide range of phase cable sizes.
- Metal clamp ensures secure fastening to the messenger.
- Optimized dielectric compatibility with Hendrix Spacer Cable.
- Excellent weather washing characteristics for long-lasting performance.
- Long leakage distance prevents flashovers.
- Phase spacing reduces voltage drop.
- Highly resistant to shock, impact, and rifle fire.
- Open diamond design for a clean, professional appearance.
- Molded from proprietary gray, track-resistant, and UV-resistant high-density polyethylene.
- Simplifies operations with faster live-line installation and removal, minimizing downtime and boosting productivity.
- Reduces the need to de-energize lines, streamlining maintenance and repair tasks to save time.
- Meets industry safety standards for confident performance in high-risk environments.

Application

Use the RTL-46DM-HS in three phase distribution systems rated up to and including 46kV, phase to phase. Typical applications are for steep grade (greater than 20°) in which the messenger suspension clamp swivels to allow the spacer to hang vertically from an angled messenger wire. Also designed for long span applications to prevent spacer from moving on the messenger. Secure the cable with the ratcheting clamp. Mount spacers at 30 foot intervals.

To eliminate swaying at pole locations, use the lower hole on the backside of the spacer with Hendrix Anti-Sway Brackets (supplied separately).

RTL-46DM-HS

Spacer | Technical Specifications



Electrical Values

Minimum Leakage Distance (in): 17-3/4
Maximum System Voltage (kV): 46
Short Circuit Rating (kA): 16.0*

Dimensions

Max. Messenger Size (in): 1.0
Max. Conductor Size (in): 2.0
Overall Dimensions (in): 26-1/2 x 17 x 3-1/2

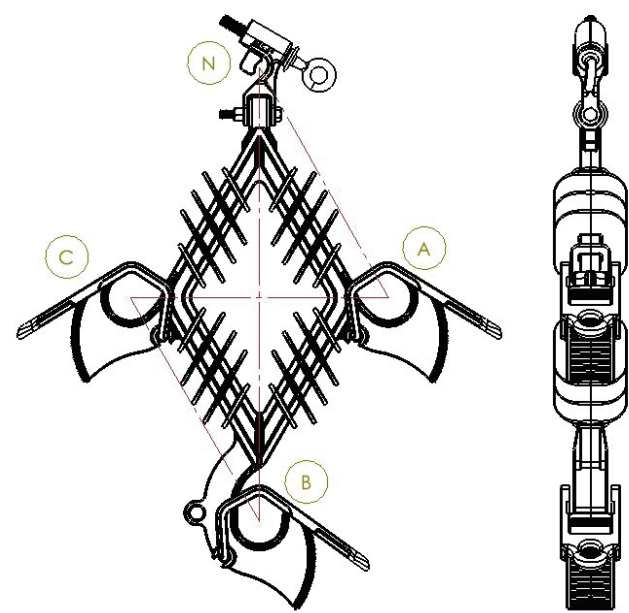
Other

Weight (lbs): 4.0
Material: High Density Polyethylene

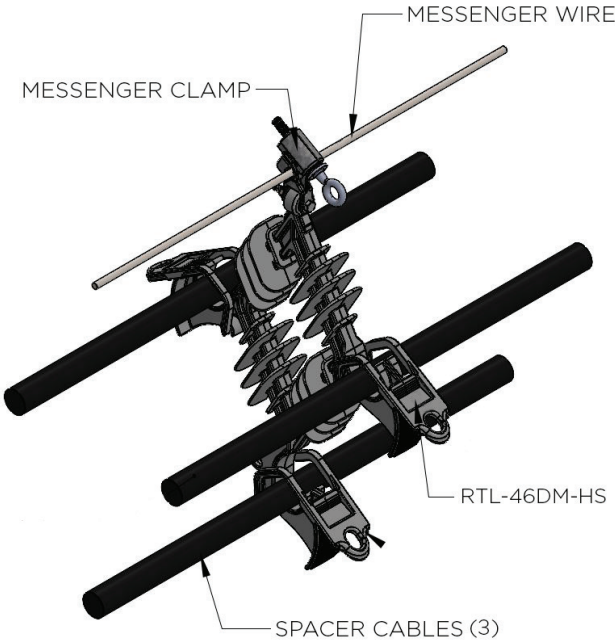
Additional Information

- *Calculated values for short circuit rating
- Reduce spacer intervals to 25'-0" when supporting 954 kcmil or larger cable size

Dimensions



Application



Phase Spacing (in)			
AN	AC	BC	BN
12	11-1/2	11-1/2	20-1/2